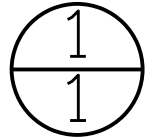


STREET HEADER AT RAILROAD WITH ASPHALT GRADE TRANSITION



Revision Date: 04/19

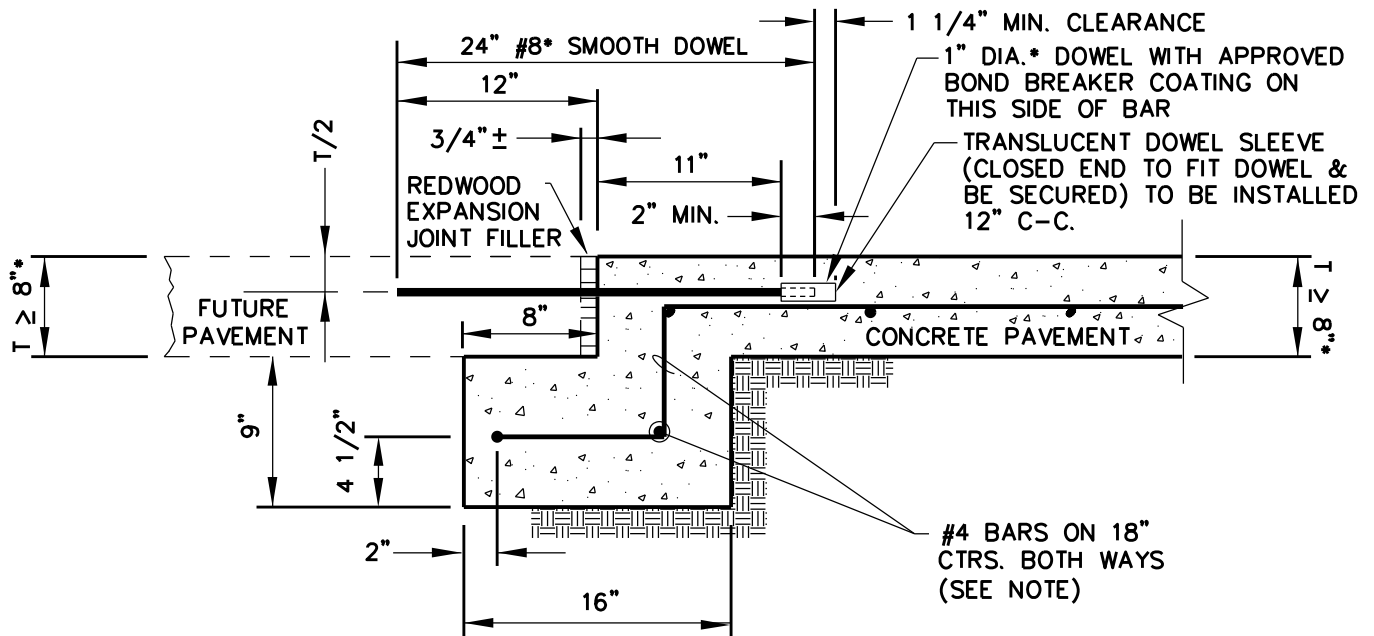
Scale : N/A Date : 06/01/05
 Design :
 Drawn : GAV
 Dwg. File : HEA_001.DWG
 Project No. : STANDARD-DETAILS



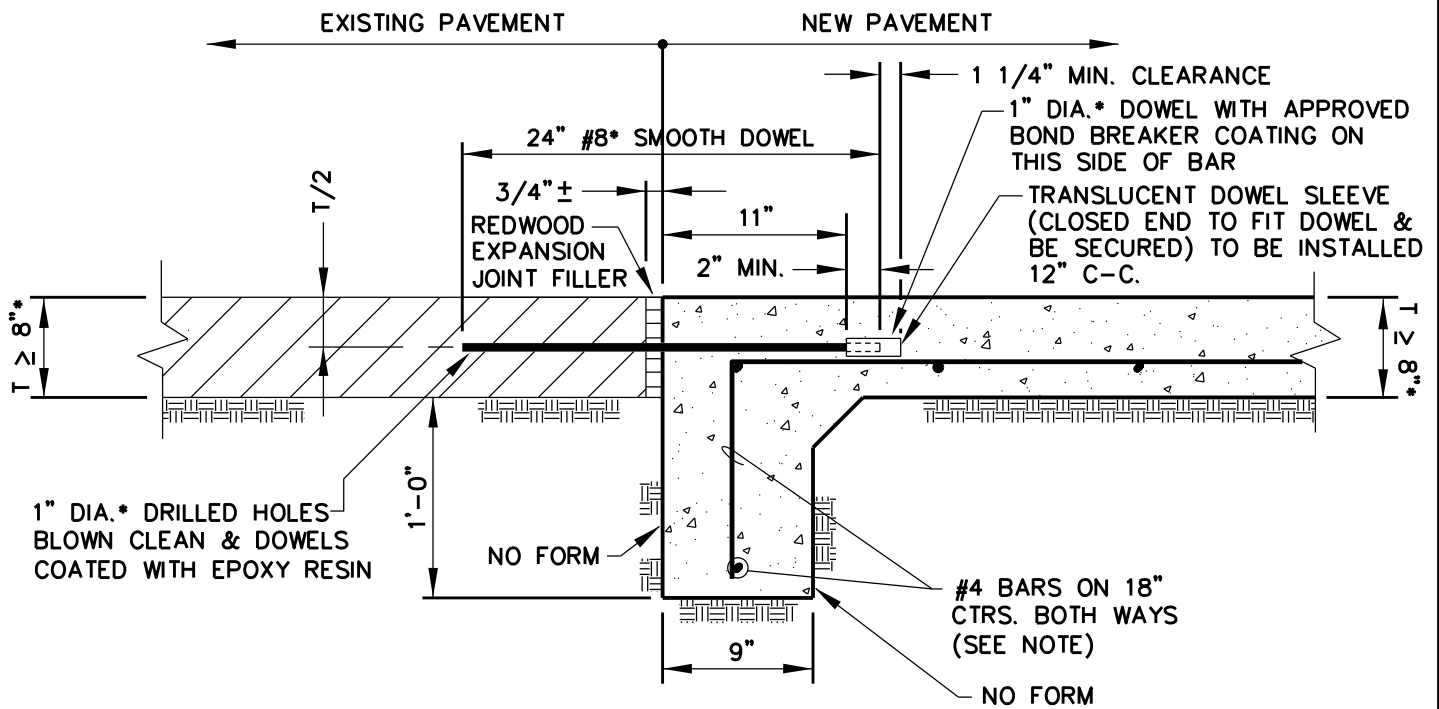
STREET HEADER AT RAILROAD

PAGE

1



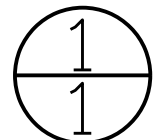
STREET HEADER FOR FUTURE PAVEMENT



STREET HEADER AT EXISTING PAVEMENT

NOTES:

1. PAVEMENT BARS TO BE BENT DOWN INTO HEADER. *FOR T=6" OR 7", 3/4" DIA. (#6) SMOOTH DOWEL
2. HEADER AND PAVEMENT TO BE MONOLITHIC.
3. T = PAVEMENT THICKNESS



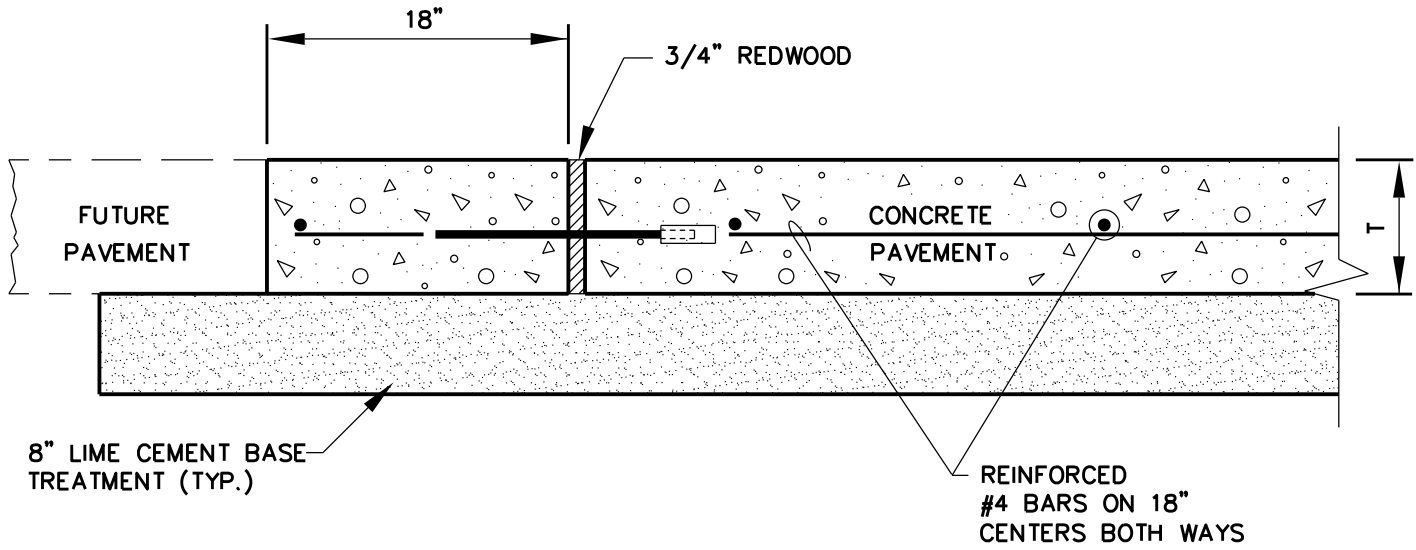
Revision Date: 04/19

Scale : N/A Date : 06/01/05
 Design :
 Drawn : GAV
 Dwg. File : HEA_002.DWG
 Project No. : STANDARD-DETAILS


GARLAND
 ENGINEERING
 STANDARD DETAILS

**STREET HEADERS FOR
 EXISTING & FUTURE PAVEMENT**

PAGE
2



FALSE HEADER DETAIL

NOTE: SEE EXPANSION JOINT DETAIL

T = PAVEMENT THICKNESS

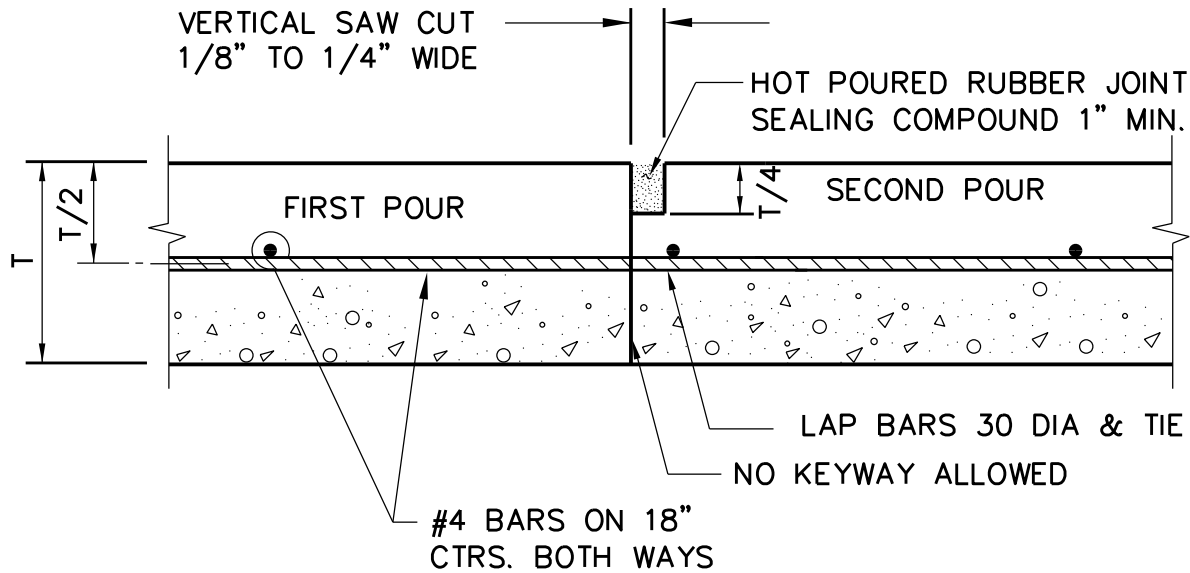
1
1

Revision Date: 04/19

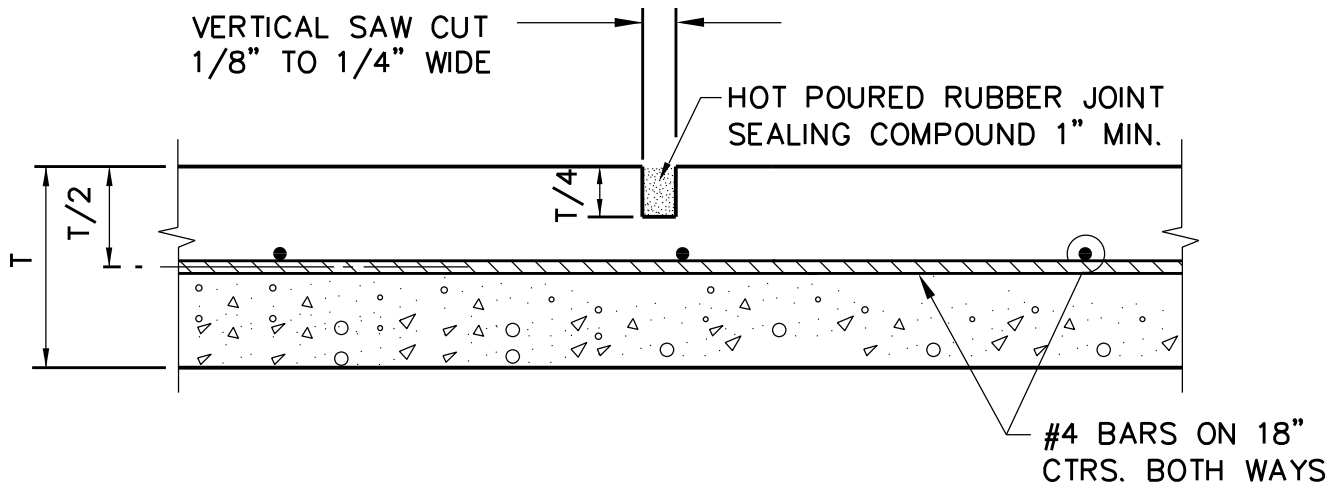
Scale : N/A	Date : 06/01/05
Design :	
Drawn : GAV	
Dwg. File : HEA_003.DWG	
Project No. : STANDARD-DETAILS	



FALSE HEADER DETAIL STREET HEADER



CONSTRUCTION JOINT



SAWED CONTRACTION JOINT

1
1

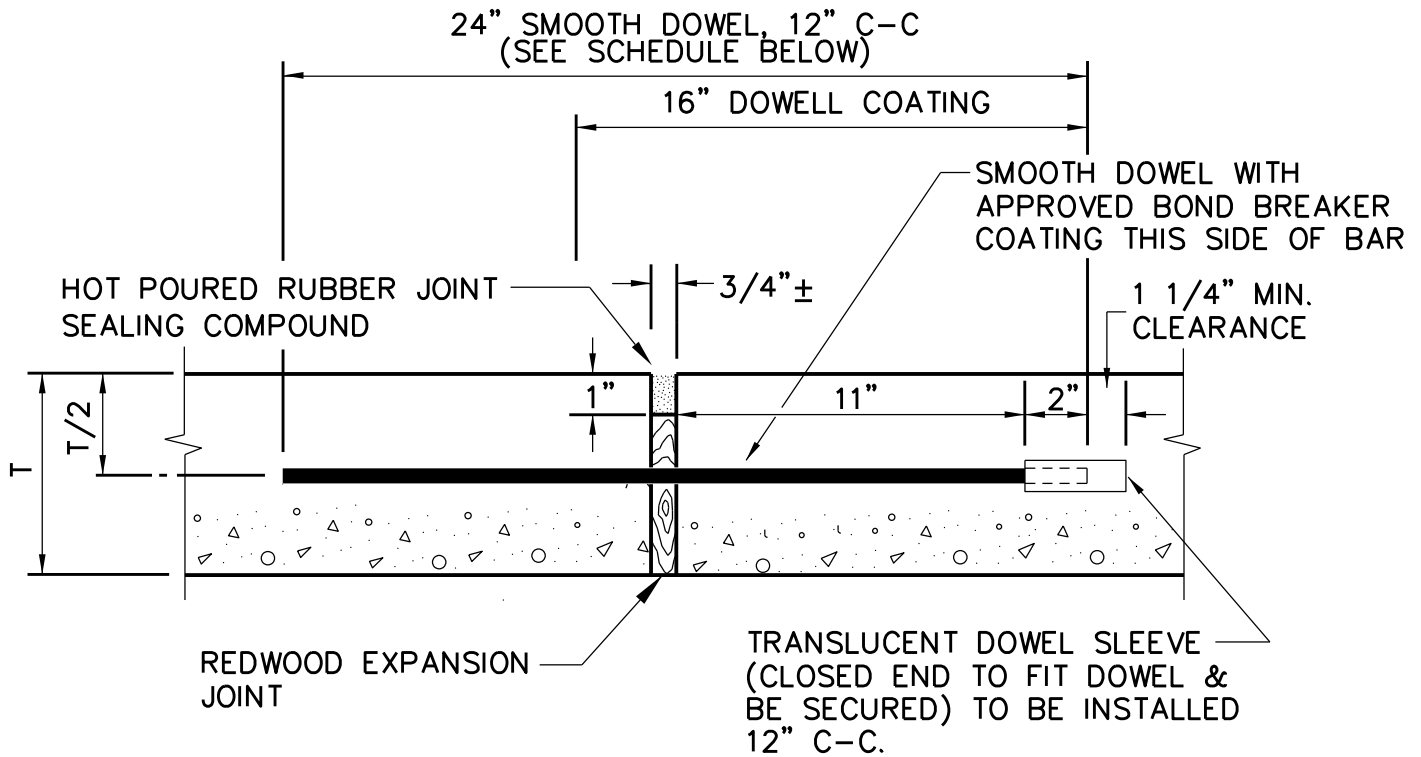
Revision Date: 04/19

Scale : N/A Date : 06/01/05
 Design :
 Drawn : GAV
 Dwg. File : HEA_004.DWG
 Project No. : STANDARD-DETAILS


GARLAND
 ENGINEERING
 STANDARD DETAILS

CONSTRUCTION JOINT /
SAWED CONTRACTION JOINT

PAGE
4



EXPANSION JOINT

(SPACED 600 FT. MAXIMUM; LOCATE AT STRUCTURES AND AT INTERSECTION P.C.'S & P.T.'S)

T	DOWEL DIA.
6" OR 7"	3/4" (#6)
8" OR >	1" (#8)
ALLEYS	1" (#8)

NOTE:

ALL EXPANSION JOINTS, DOWELS MUST BE PERPENDICULAR TO PAVEMENT
 DOWEL SUPPORT SHALL BE OF A METHOD APPROVED BY CITY OF GARLAND FIELD ENGINEERING.

1
1

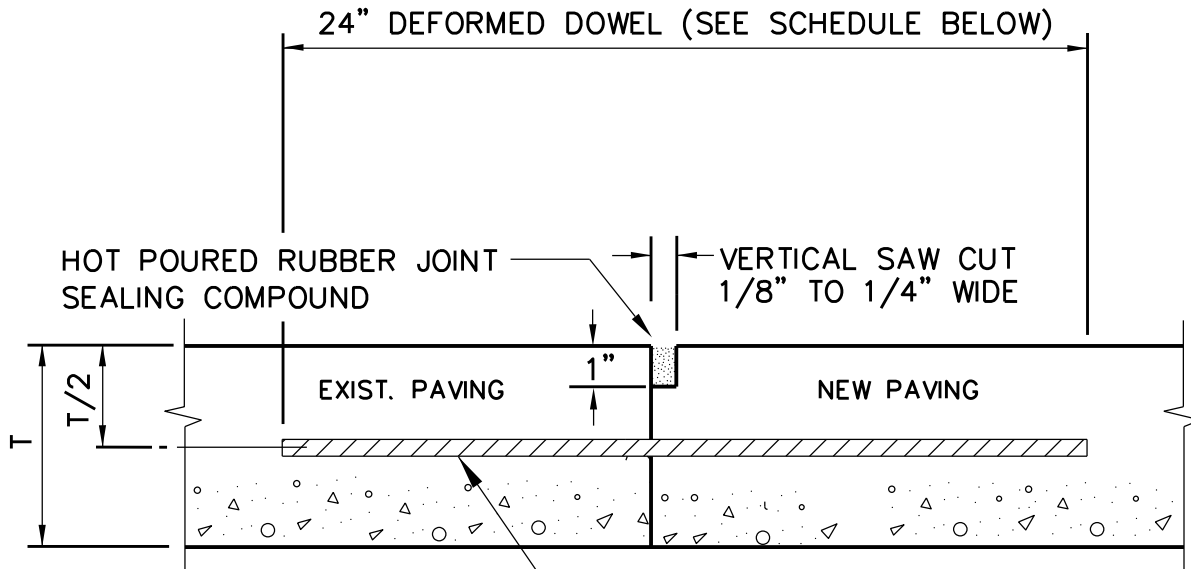
Revision Date: 04/19

Scale : N/A Date : 06/01/05
 Design :
 Drawn : GAV
 Dwg. File : HEA_004.DWG
 Project No. : STANDARD-DETAILS


GARLAND
 ENGINEERING
 STANDARD DETAILS

EXPANSION JOINT

PAGE
5



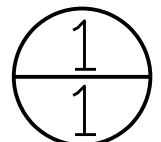
DEFORMED DOWEL DRILLED AND EPOXIED INTO EXISTING PAVING AT 12" O.C.

BUTT JOINT (LONGITUDINAL OR TRANSVERSE)

T	DOWEL DIA.
6" OR 7"	3/4" (#6)
8" OR >	1" (#8)
ALLEYS	1" (#8)

NOTE:

DOWELS MUST BE PERPENDICULAR TO PAVEMENT.
DOWEL SUPPORT SHALL BE OF A METHOD APPROVED BY CITY OF GARLAND FIELD ENGINEERING.



Revision Date: 04/19

Scale : N/A Date : 06/01/05
Design :
Drawn : GAV
Dwg. File : HEA_004.DWG
Project No. : STANDARD-DETAILS


GARLAND
 ENGINEERING
STANDARD DETAILS

BUTT JOINT

PAGE
6